

AERO-FITTINGS

(XLPE & NBR Factory Prefabricated Fittings)

Prefabricated Aero-fittings are available in both XLPE and Flexible Elastomeric foam. These are made into different shapes such as Elbows, T and Y Sections. Prefabricated Fittings are moisture resistant, antifungal and antibacterial resistant properties with better insulation properties.

Features:-

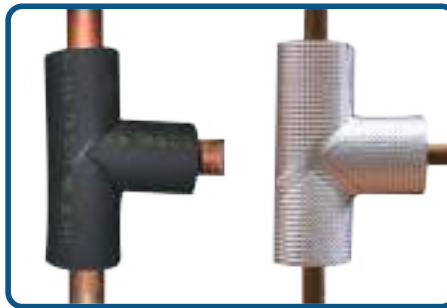
- Prefabricated to fit over different Elbows and Tees.
- Sealing of joints and preslit with Aerofoam glue and Alupet tape.

Application:-

- Used for hot, chilled water pipes and air conditioning applications with minimal cost of installation.
- For outdoor application Aerofoam N-Clad fittings are recommended.



45° Elbow



Tee Joint



90° Elbow



Y - Joint



90° 3 Pieces Elbow



90° 4 Pieces Elbow

Size Availability: XLPE fittings available in wall thickness from 3/8" to 2" (10mm to 50mm) and ID's from 1/4" to 10" (6mm to 273mm). NBR fittings available in wall thickness from 1/4" to 1-1/4" (6mm to 32mm) and ID's from 1/4" to 2-5/8" (6mm to 67mm). (ID range is subject to variation depending on wall thickness).

Hira Technologies Private Limited

Plot I-02 (Part -II) Khed City Zone - DTA Kanhersar, Khed,
Pune - 410 505.

☎ 91 - 2135634400

✉ enquiry@hira.com 🌐 aerofoam.co.in



Hira
TECHNOLOGIES

AERO-FITTINGS



- Easy to work and apply
- Saves installation time
- Labour Reduction
- Fibre, Dust, CFC & HCFC free

ASTM E84

CLASS 0



*Factory
Prefabricated
Fittings*